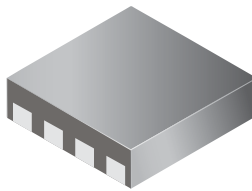


## Ultra-Small Mobile Adjustable Xenon Photoflash Capacitor Charger with IGBT Driver

### Features and Benefits

- Primary-side output voltage sensing; no resistor divider required
- Adjustable switch peak current limit up to 1.5 A with single-wire programming through the CHARGE pin
- Option to fine-tune target voltage
- Ultra-small 2 × 2 DFN/MLP-8 package
- Integrated IGBT driver with internal gate resistors
- Low quiescent current draw (0.5  $\mu$ A max. in shutdown mode)
- 1V logic ( $V_{HI}(\min)$ ) compatibility
- Zero-voltage switching for lower loss
- >75% efficiency
- Charge complete indication
- Integrated 50 V DMOS switch

### Package: 8-pin DFN/MLP (suffix EE)



2 mm × 2 mm, 0.60 mm height

Not to scale

### Description

The Allegro® A8739 is a Xenon photoflash charger IC designed to provide an ultra-small solution with flexibility to adjust both charging current limit and output voltage target. By using primary-side voltage sensing, the need for a secondary-side resistive voltage divider is eliminated. This has the additional benefit of reducing leakage currents on the secondary side of the transformer. Target output voltage is primarily determined by the transformer turns ratio, but it can be further adjusted (in steps of  $-5$  V each) using an external resistor. This enables better output accuracy, as well as greater flexibility in the selection of transformers.

To extend battery life, the A8739 features very low supply current draw (0.5  $\mu$ A max in shutdown mode and 10  $\mu$ A in standby mode). The switch current limit can be programmed from 0.45 to 1.5 A in 16 steps with single wire interface, through the CHARGE pin.

The IGBT driver also has internal gate resistors for minimum external component count. The charge and trigger voltage logic thresholds are set at 1  $V_{HI}(\min)$  to support applications implementing low-voltage control logic.

The A8739 is available in an 8-contact 2 mm × 2 mm DFN/MLP package with a 0.60 maximum overall package height, and an exposed pad for enhanced thermal performance. It is lead (Pb) free with 100% matte tin leadframe plating.

### Typical Applications

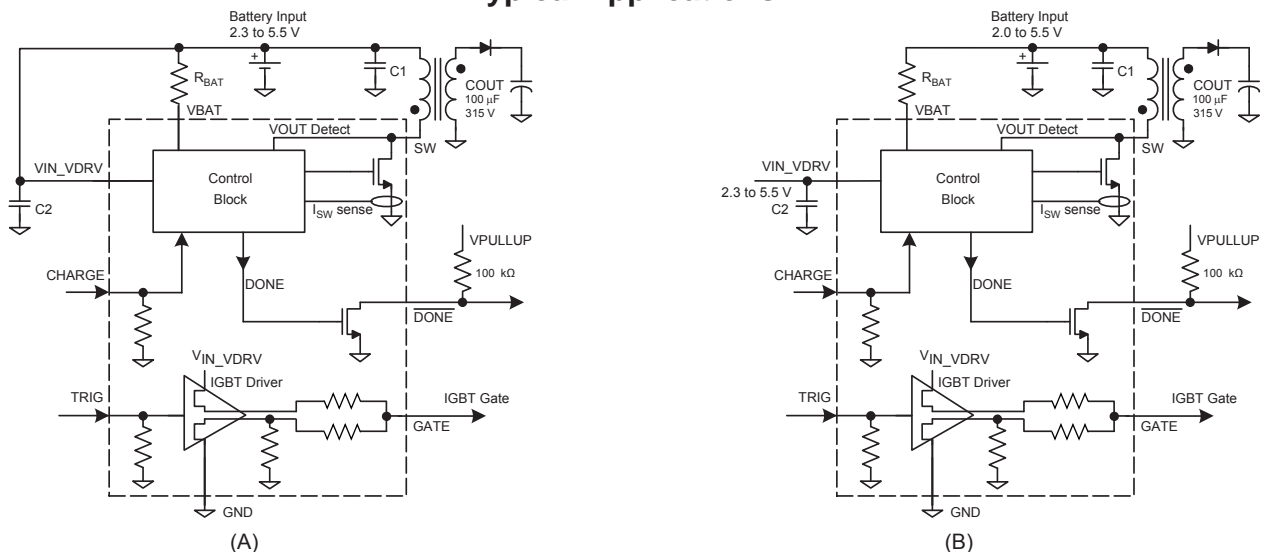


Figure 1. Typical applications: (A) with single battery supply and (B) with separate bias supply

### Selection Guide

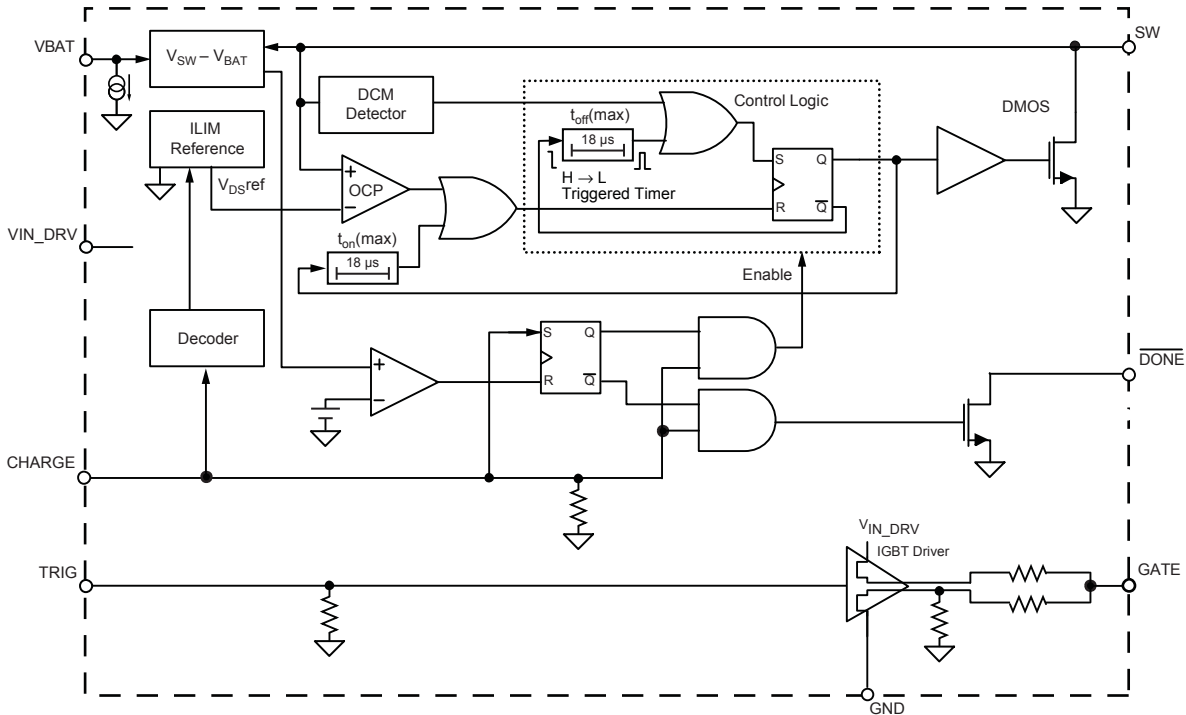
Part Number	Packing	Package
A8739EEETR-T	1500 pieces per reel	8-contact DFN/MLP with exposed thermal pad



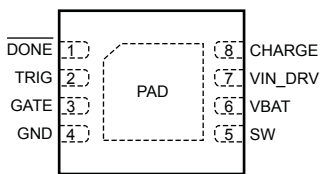
### Absolute Maximum Ratings

Characteristic	Symbol	Notes	Rating	Units
SW Pin	$V_{SW}$	DC voltage. ( $V_{SW}$ is self-clamped by internal active clamp and is allowed to exceed 50 V during flyback spike durations. Maximum repetitive energy during flyback spike: 0.5 $\mu$ J at frequency $\leq$ 400 kHz.)	-0.3 to 50	V
VIN_DRV, VBAT Pins	$V_{IN}$		-0.3 to 6.0	V
CHARGE, TRIG, $\overline{DONE}$ Pins		Care should be taken to limit the current when -0.6 V is applied to these pins.	-0.6 to $V_{IN} + 0.3$ V	V
Remaining Pins			-0.3 to $V_{IN} + 0.3$ V	V
Operating Ambient Temperature	$T_A$	Range E	-40 to 85	$^{\circ}$ C
Maximum Junction	$T_J(max)$		150	$^{\circ}$ C
Storage Temperature	$T_{stg}$		-55 to 150	$^{\circ}$ C

## Functional Block Diagram



## Pin-out Diagram



(Top View)

## Terminal List

Number	Name	Function
1	$\overline{\text{DONE}}$	Open collector output, pulls low when output reaches target value and CHARGE is high. Goes high during charging or whenever CHARGE is low.
2	TRIG	IGBT trigger input.
3	GATE	IGBT gate drive output.
4	GND	Ground connection.
5	SW	Drain connection of internal DMOS switch. Connect to transformer primary winding.
6	VBAT	Connect to battery voltage; directly to select the default output voltage, or through a series resistor to select a lower output voltage step.
7	VIN_DRV	Input voltage. Connect to 3 to 5.5 V bias supply. Decouple $V_{IN}$ voltage with 0.1 $\mu\text{F}$ ceramic capacitor placed close to this pin.
8	CHARGE	Charge enable and current limit serial programming pin. Set this pin low to shut down the chip.
-	PAD	Exposed pad for enhanced thermal dissipation. Connect to ground plane.

**ELECTRICAL CHARACTERISTICS** Typical values are valid at  $V_{IN} = V_{BAT} = 3.6\text{ V}$ ;  $T_A = 25^\circ\text{C}$ , except • indicates specifications guaranteed from  $-40^\circ\text{C}$  to  $85^\circ\text{C}$  ambient, unless otherwise noted

Characteristics	Symbol	Test Conditions	Min.	Typ.	Max.	Unit	
V <sub>BAT</sub> Voltage Range	V <sub>BAT</sub>		• 2.0	–	5.5	V	
V <sub>IN_DRV</sub> Voltage Range	V <sub>IN</sub>		• 2.3	–	5.5	V	
UVLO Enable Threshold	V <sub>INUV</sub>	V <sub>IN</sub> rising	–	2.05	2.2	V	
UVLO Hysteresis	V <sub>INUV(hys)</sub>		–	150	–	mV	
V <sub>IN</sub> Supply Current	I <sub>IN</sub>	Shutdown (CHARGE = 0 V, TRIG = 0 V)	–	0.02	0.5	μA	
		Charging complete	–	50	100	μA	
		Charging (CHARGE = V <sub>IN</sub> , TRIG = 0 V)	–	2	–	mA	
V <sub>BAT</sub> Pin Supply Current	I <sub>BAT</sub>	Shutdown (CHARGE = 0 V, TRIG = 0 V)	–	0.01	1	μA	
		Charging done (CHARGE = V <sub>IN</sub> , DONE = 0 V)	–	–	5	μA	
		Charging (CHARGE = V <sub>IN</sub> , TRIG = 0 V)	–	50	–	μA	
<b>Current Limit</b>							
Primary-Side Current Limit <sup>1</sup>	I <sub>SWLIM</sub>	100% setting		1.35	1.50	1.65	A
Switch Current Limit (ILIM Programming Input on CHARGE Pin)	I <sub>SWLIM1</sub>	Default setting		–	100	–	%
	I <sub>SWLIM2</sub>	One pulse applied to CHARGE pin		–	95	–	%
	I <sub>SWLIM3</sub>	Two pulses applied to CHARGE pin		–	90	–	%
	I <sub>SWLIM4</sub>	Three pulses applied to CHARGE pin		–	86	–	%
	I <sub>SWLIM5</sub>	Four pulses applied to CHARGE pin		–	81	–	%
	I <sub>SWLIM6</sub>	Five pulses applied to CHARGE pin		–	76	–	%
	I <sub>SWLIM7</sub>	Six pulses applied to CHARGE pin		–	71	–	%
	I <sub>SWLIM8</sub>	Seven pulses applied to CHARGE pin		–	67	–	%
	I <sub>SWLIM9</sub>	Eight pulses applied to CHARGE pin		–	62	–	%
	I <sub>SWLIM10</sub>	Nine pulses applied to CHARGE pin		–	57	–	%
	I <sub>SWLIM11</sub>	Ten pulses applied to CHARGE pin		–	52	–	%
	I <sub>SWLIM12</sub>	Eleven pulses applied to CHARGE pin		–	48	–	%
	I <sub>SWLIM13</sub>	Twelve pulses applied to CHARGE pin		–	43	–	%
	I <sub>SWLIM14</sub>	Thirteen pulses applied to CHARGE pin		–	38	–	%
	I <sub>SWLIM15</sub>	Fourteen pulses applied to CHARGE pin		–	33	–	%
	I <sub>SWLIM16</sub>	Fifteen pulses applied to CHARGE pin		–	29	–	%
Switch On-Resistance	R <sub>SWDS(on)</sub>	V <sub>IN_DRV</sub> = 3.6 V, I <sub>D</sub> = 800 mA, T <sub>A</sub> = 25°C		–	0.4	–	Ω
Switch Leakage Current <sup>2</sup>	I <sub>SWLK</sub>	V <sub>SW</sub> = 5.5, over full temperature range		–	–	2	μA
CHARGE Pull-down Resistance	R <sub>CHGPD</sub>			–	100	–	kΩ
CHARGE Input Voltage <sup>2</sup>	V <sub>CHARGE</sub>	High, over input supply range	•	1.0	–	–	V
		Low, over input supply range	•	–	–	0.4	V

Continued on the next page...

**ELECTRICAL CHARACTERISTICS** (Continued) Typical values are valid at  $V_{IN} = V_{BAT} = 3.6\text{ V}$ ;  $T_A = 25^\circ\text{C}$ , except • indicates specifications guaranteed from  $-40^\circ\text{C}$  to  $85^\circ\text{C}$  ambient, unless otherwise noted

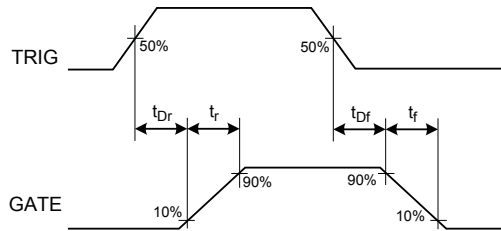
Charge Pin Programming							
ILIM Programming High at CHARGE pin 2	$t_{ILIM(H)init}$	Initial Pulse		15	–	–	$\mu\text{s}$
	$t_{ILIM(H)}$	Subsequent Pulses		0.2	–	–	$\mu\text{s}$
ILIM Programming Low at CHARGE pin 2	$t_{ILIM(L)}$			0.2	–	–	$\mu\text{s}$
Total ILIM Setup Time at CHARGE pin 2	$t_{ILIM(SU)}$			–	200	–	$\mu\text{s}$
Switch-Off Timeout	$t_{off(max)}$			–	18	–	$\mu\text{s}$
Switch-On Timeout	$t_{on(max)}$			–	18	–	$\mu\text{s}$
Output Comparator Trip Voltage	$V_{OUTTRIP1}$	Measured as $V_{SW} - V_{BAT}$ ( $R_{BAT} = 0\ \Omega$ )	•	31	31.5	32	V
	$V_{OUTTRIP2}$	Measured as $V_{SW} - V_{BAT}$ ( $R_{BAT} = 845\ \Omega$ )	•	–	31.0	–	V
	$V_{OUTTRIP3}$	Measured as $V_{SW} - V_{BAT}$ ( $R_{BAT} = 2.32\ \text{k}\Omega$ )	•	–	30.5	–	V
	$V_{OUTTRIP4}$	Measured as $V_{SW} - V_{BAT}$ ( $R_{BAT} = 4.87\ \text{k}\Omega$ )	•	–	30.0	–	V
	$V_{OUTTRIP5}$	Measured as $V_{SW} - V_{BAT}$ ( $R_{BAT} = 9.09\ \text{k}\Omega$ )	•	–	29.5	–	V
$\overline{DONE}$ Leakage Current <sup>2</sup>	$I_{DONELK}$		•	–	–	1	$\mu\text{A}$
Output Low Voltage <sup>2</sup>	$V_{DONEL}$	32 $\mu\text{A}$ into $\overline{DONE}$ pin	•	–	–	100	mV
Output Voltage Overdrive	$V_{OUTOV}$	Pulse width = 200 ns (90% to 90%)		–	200	400	mV
dV/dt Threshold for ZVS Comparator	dV/dt	Measured at SW pin		–	20	–	V/ $\mu\text{s}$
IGBT Driver							
TRIG Input Voltage <sup>2</sup>	$V_{TRIG(H)}$	Input = logic high, over input supply range	•	1	–	–	V
	$V_{TRIG(L)}$	Input = logic low, over input supply range	•	–	–	0.4	V
TRIG Pull-Down Resistor	$R_{TRIGPD}$			–	100	–	k $\Omega$
GATE Resistance to VIN_DRV	$R_{SrcDS(on)}$	$V_{GATE} = 1.8\text{ V}$		–	21	–	$\Omega$
GATE Resistance to GND	$R_{SnkDS(on)}$	$V_{GATE} = 1.8\text{ V}$		–	27	–	$\Omega$
Propagation Delay (Rising) <sup>3</sup>	$t_{Dr}$	Measurement taken at GATE pin, $C_L = 6500\ \text{pF}$		–	25	–	ns
Propagation Delay (Falling) <sup>3</sup>	$t_{Df}$			–	60	–	ns
Output Rise Time <sup>3</sup>	$t_r$			–	290	–	ns
Output Fall Time <sup>3</sup>	$t_f$			–	380	–	ns
GATE Pull-Down Resistor	$R_{GTPD}$			–	20	–	k $\Omega$

<sup>1</sup>Current limit guaranteed by design and correlation to static test.

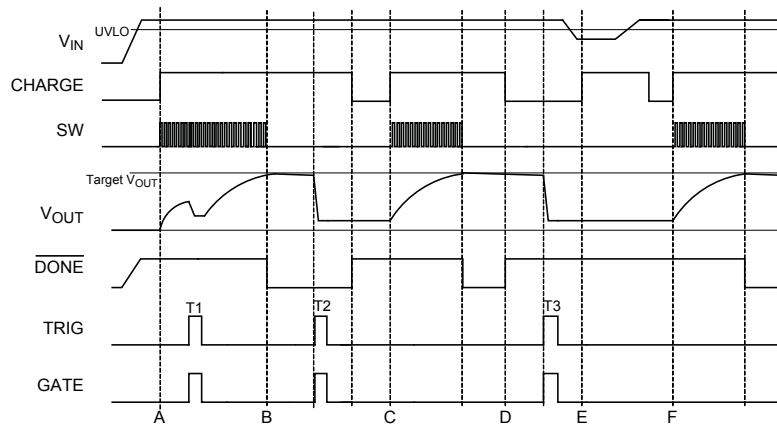
<sup>2</sup>Specifications throughout the range  $T_A = -40^\circ\text{C}$  to  $85^\circ\text{C}$  guaranteed by design and characterization.

<sup>3</sup>See IGBT Drive Timing Definition diagram for further information.

**IGBT Drive Timing Definition**



**Operation Timing Diagram**



**Explanation of Events**

- A: Start charging by pulling CHARGE to high, provided that  $V_{IN}$  is above UVLO level.
  - B: Charging stops when  $V_{OUT}$  reaches the target voltage
  - C: Start a new charging process with a low-to-high transition at the CHARGE pin.
  - D: Pull CHARGE to low to put the controller in low-power standby mode.
  - E: Charging does not start, because  $V_{IN}$  is below UVLO level when CHARGE goes high.
  - F: After  $V_{IN}$  goes above UVLO, another low-to-high transition at the CHARGE pin is required to start the charging.
- T1, T2, T3 (Trigger instances): IGBT driver output pulled high whenever the TRIG pin is at logic high. It is recommended to avoid applying any trigger pulses during charging.

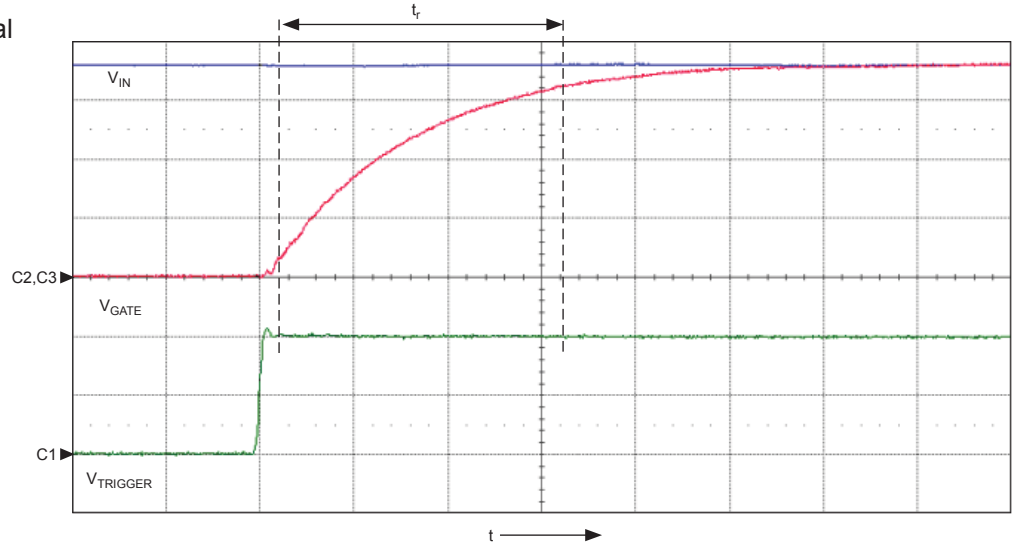
**Characteristic Performance**

**IGBT Drive Performance**

IGBT drive waveforms are measured at pin, with capacitive load of 6800 pF

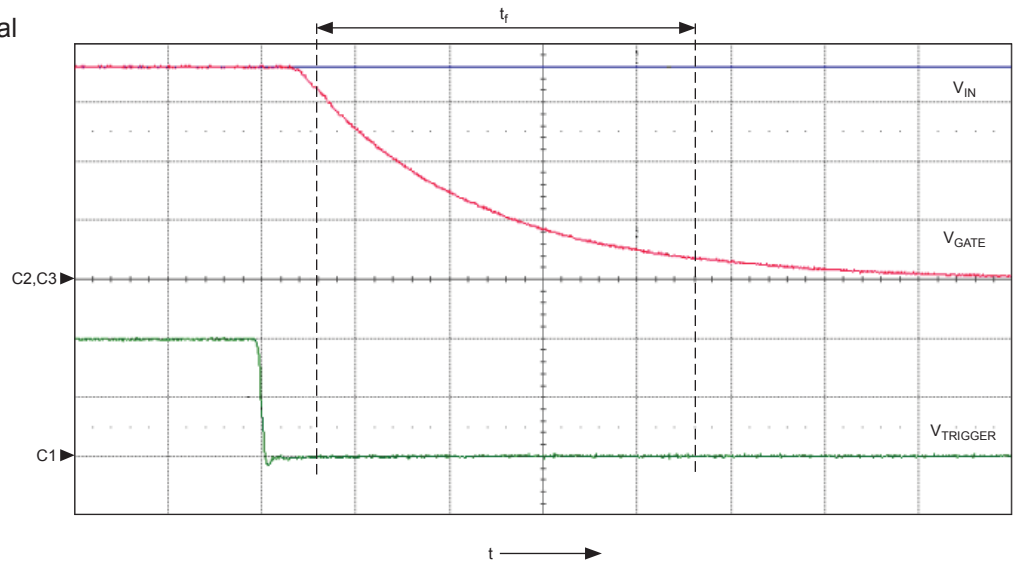
Rising Signal

Symbol	Parameter	Units/Division
C1	$V_{TRIGGER}$	1 V
C2	$V_{GATE}$	1 V
C3	$V_{IN}$	1 V
t	time	100 ns
Conditions	Parameter	Value
	$t_{Dr}$	23 ns
	$t_r$	320 ns
	$C_{LOAD}$	6.8 nF



Falling Signal

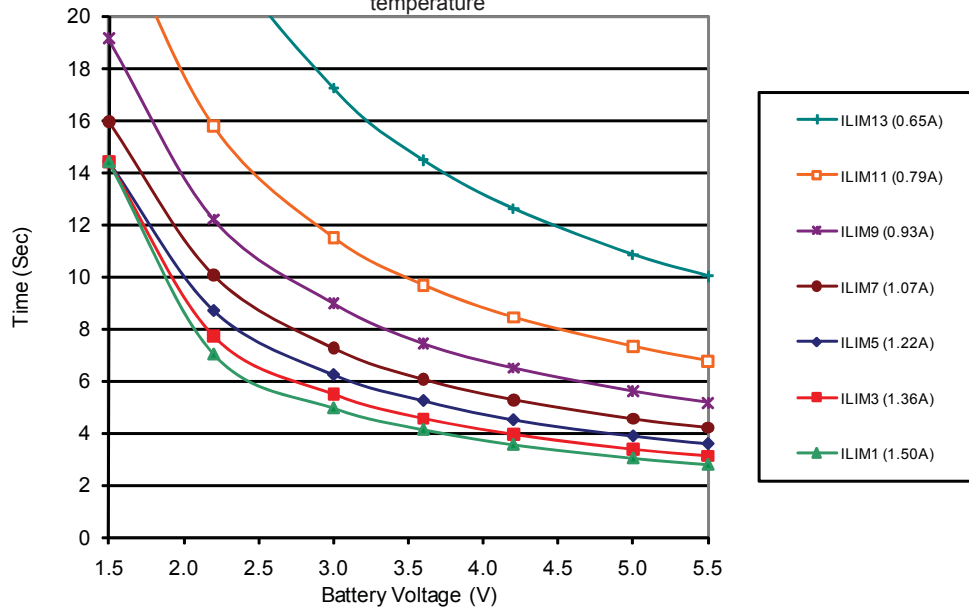
Symbol	Parameter	Units/Division
C1	$V_{TRIGGER}$	1 V
C2	$V_{GATE}$	1 V
C3	$V_{IN}$	1 V
t	time	100 ns
Conditions	Parameter	Value
	$t_{Dr}$	58 ns
	$t_f$	402 ns
	$C_{LOAD}$	6.8 nF



Characteristic Performance

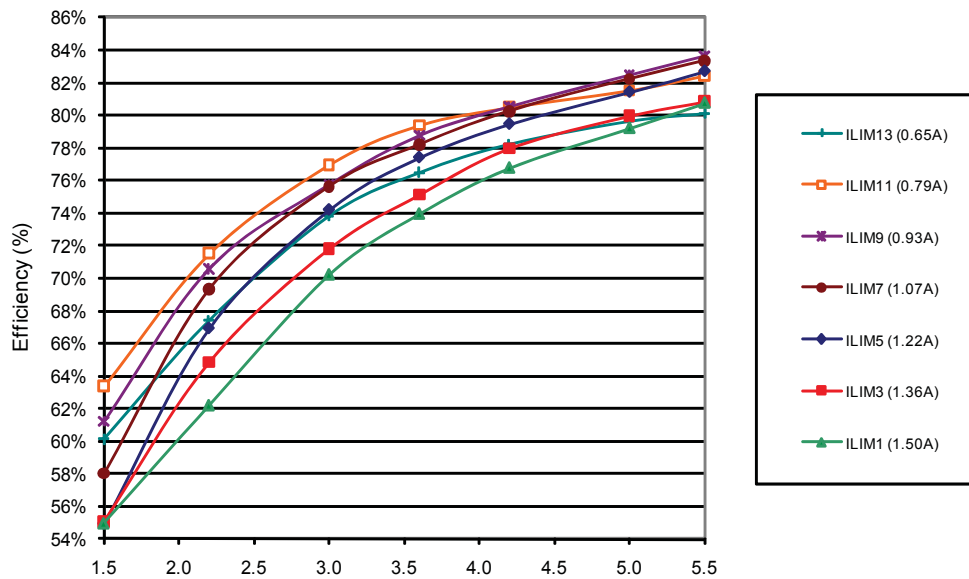
Charge Time versus Battery Voltage at Various ILIM

$R_{BAT} = 0 \Omega$ , Transformer  $L_{PRIMARY} = 12.8 \mu H$ ,  $N = 10.25$ ,  $V_{IN} = 3.6 V$ ,  $C_{OUT} = 100 \mu F / 330 V$  UCC, at room temperature



Efficiency versus Battery Voltage at Various ILIM

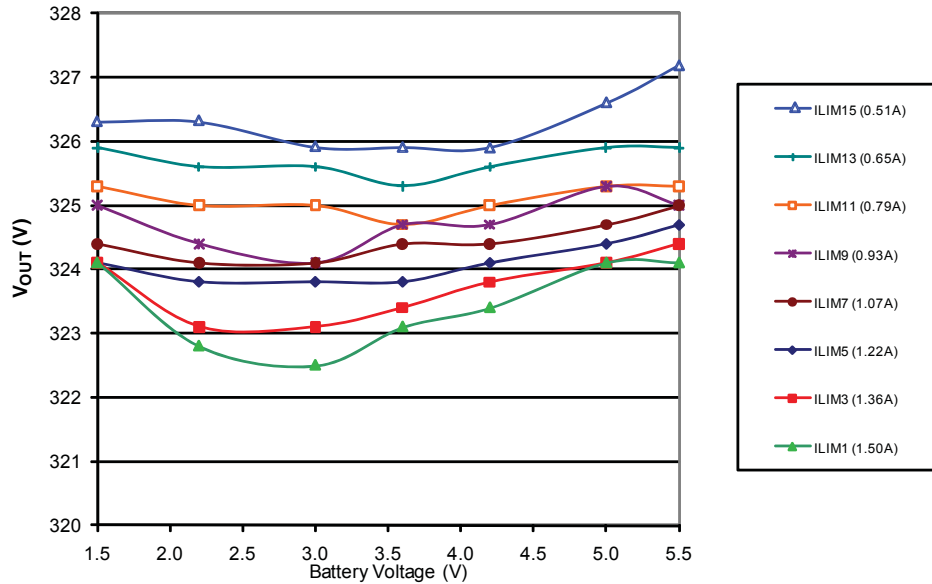
$R_{BAT} = 0 \Omega$ , Transformer  $L_{PRIMARY} = 12.8 \mu H$ ,  $N = 10.25$ ,  $V_{IN} = 3.6 V$ , at room temperature





**Final Output Voltage versus Battery Voltage at Various ILIM**

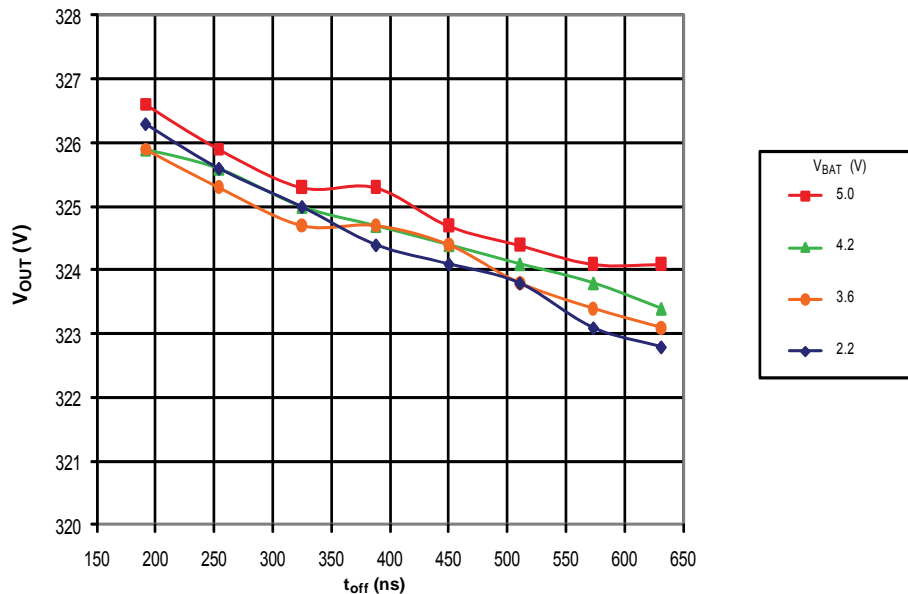
$R_{BAT} = 0 \Omega$ , Transformer  $L_{PRIMARY} = 12.8 \mu H$ ,  $N = 10.25$ ,  $V_{IN} = 3.6 V$ , at room temperature

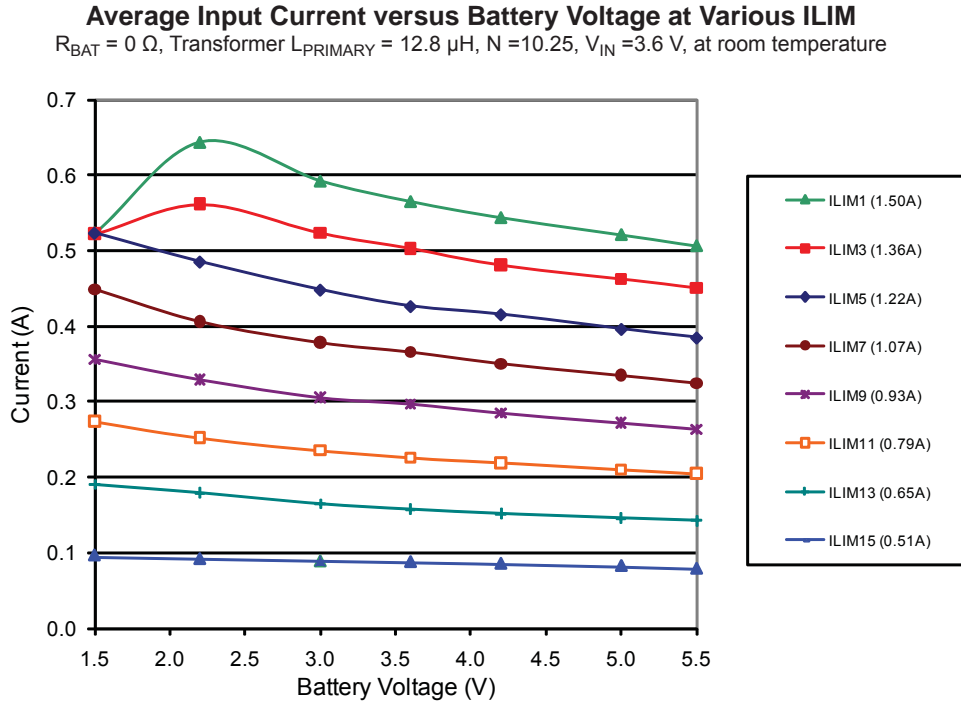


Note: Output voltage is sensed from the primary side winding when the switch turns off. This duration,  $t_{off}$ , has to be long enough ( $>200 ns$ ) in order to obtain an accurate measurement. The value of  $t_{off}$  depends on  $I_{SWlim}$ , primary inductance,  $L_{primary}$ , and the turns ratio,  $N$ , as given by:  $t_{off} = (I_{SWlim} \times L_{PRIMARY} \times N) / V_{OUT}$ .

**Final Output Voltage versus Secondary Side Conduction Time at Various Battery Voltages**

$R_{BAT} = 0 \Omega$ , Transformer  $L_{PRIMARY} = 12.8 \mu H$ ,  $N = 10.25$ ,  $V_{IN} = 3.6 V$ , at room temperature



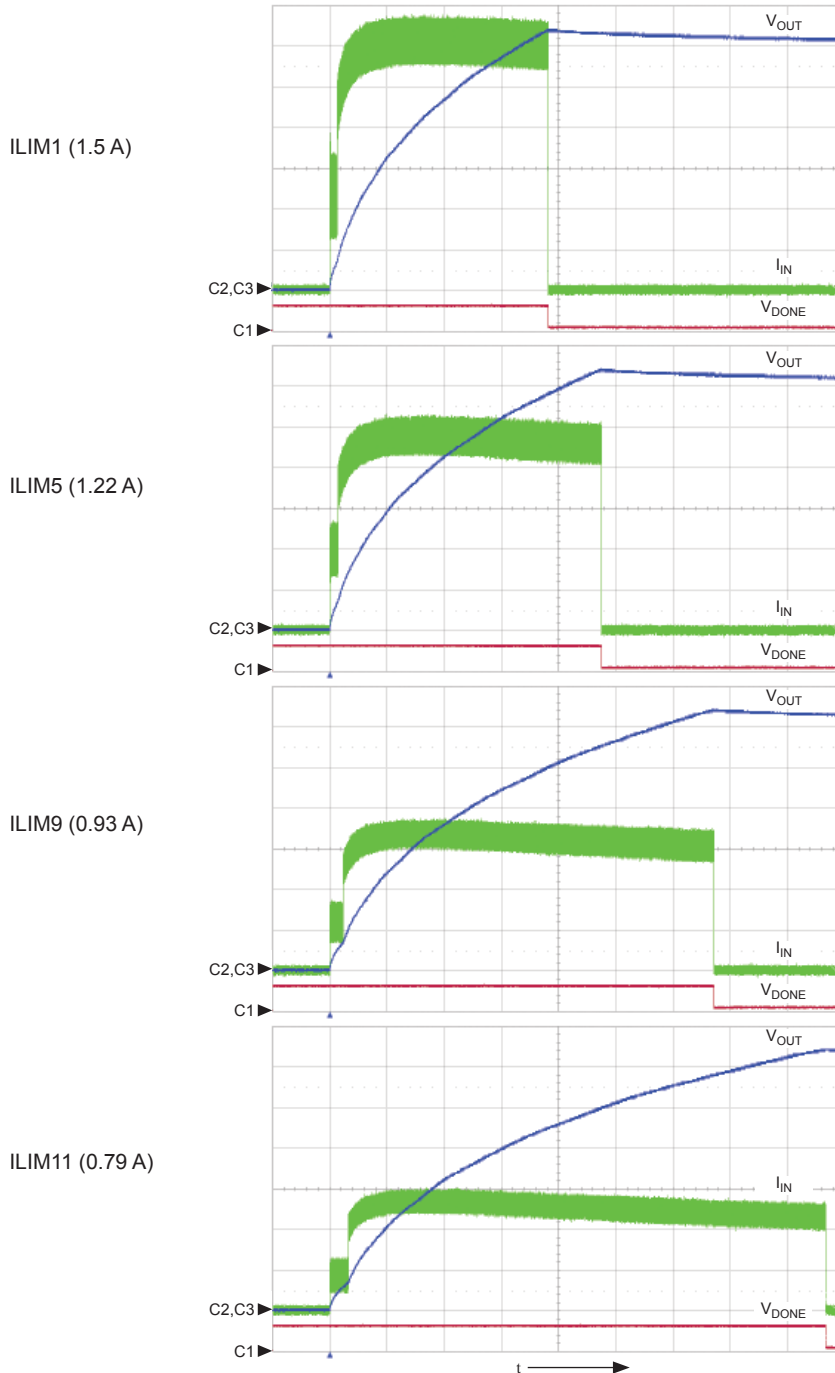


Note: Peak switch current is limited by the maximum on-time and di/dt of the transformer primary current; therefore, average input current drops at very low battery voltage.

Charging Waveforms

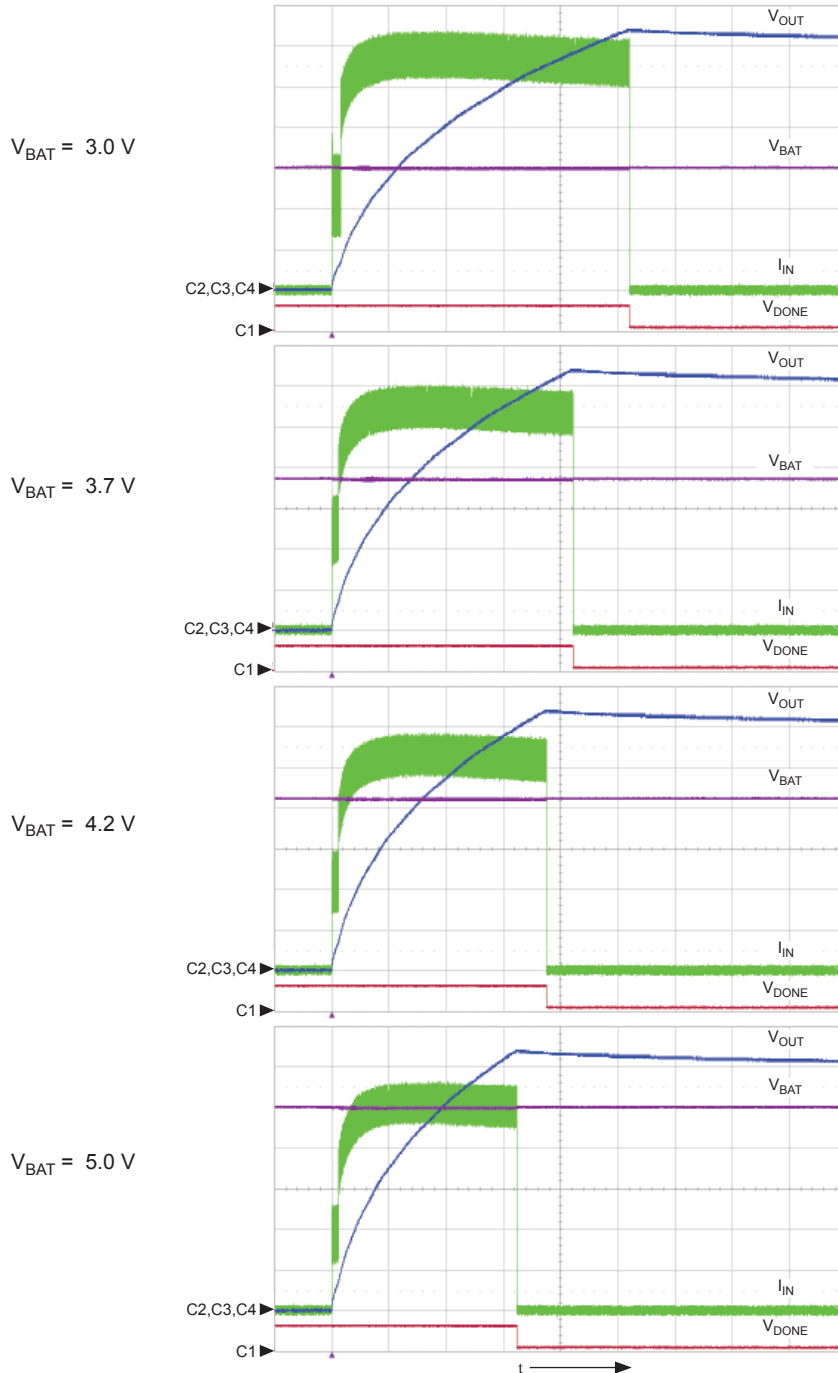
Output Capacitor Charging at Various Peak Current Limits

Test conditions:  $V_{IN} = 3.0\text{ V}$ ,  $V_{BAT} = 3.7\text{ V}$ ,  $C_{OUT} = 100\text{ }\mu\text{F} / 330\text{ V UCC}$ , transformer = T-16-024A ( $L_{PRIMARY} = 12.8\text{ }\mu\text{H}$ ,  $N = 10.25$ ), at room temperature  
 Oscilloscope settings: Ch1 =  $\overline{DONE}$  (5 V / div), Ch2 = Output Voltage (50 V / div), Ch3 = Input Current (100 mA / div), Time scale = 1 sec / div



**Output Capacitor Charging at Various Battery Voltages**

Test conditions:  $V_{IN} = 3.0\text{ V}$ ,  $I_{LIM3} (1.36\text{ A})$ ,  $C_{OUT} = 100\text{ }\mu\text{F} / 330\text{ V UCC}$ , transformer = T-16-024A ( $L_{PRIMARY} = 12.8\text{ }\mu\text{H}$ ,  $N = 10.25$ ), at room temperature  
 Oscilloscope settings: Ch1 =  $\overline{DONE}$  (5 V / div), Ch2 = Battery Voltage (1 V / div), Ch3 = Output Voltage (50 V / div), Ch4 = Input Current (100 mA V / div),  
 Time scale = 1 sec / div



## Functional Description

### General Operation Overview

The charging operation is started by a low-to-high signal on the CHARGE pin, provided that  $V_{IN}$  is above the  $V_{UVLO}$  level. It is strongly recommended to keep the CHARGE pin at logic low during power-up. After  $V_{IN}$  exceeds the UVLO level, a low-to-high transition on the CHARGE pin is required to start the charging.

The  $\overline{DONE}$  open-drain indicator is pulled low when CHARGE is high and target output voltage is reached. The primary peak current is set to 1.5 A by default, but it can be programmed from 1.5 A down to approximately 0.44 A in 15 steps. See the ILIM Programming section for details.

When a charging cycle is initiated, the transformer primary side current,  $I_{PRIMARY}$ , ramps-up linearly at a rate determined by the combined effect of the battery voltage,  $V_{BAT}$ , and the primary side inductance,  $L_{PRIMARY}$ . When  $I_{PRIMARY}$  reaches the current limit,  $I_{SWLIM}$ , the internal MOSFET is turned off immediately, allowing the energy to be pushed into the photoflash capacitor,  $C_{OUT}$ , from the secondary winding. The secondary side current drops linearly as  $C_{OUT}$  charges. The switching cycle starts again, either after the transformer flux is reset, or after a predetermined time period,  $t_{OFF(max)}$  (18  $\mu$ s), whichever occurs first.

The A8739 senses output voltage indirectly on primary side. This eliminates the need for high voltage feedback resistors required for secondary sensing. Flyback converter stops switching when output voltage reaches:

$$V_{OUT} = K \times N - V_d,$$

Where:

$K = 31.5$  V typically,

$V_d$  is the forward drop of the output diode (approximately 2 V), and

$N$  is transformer turns ratio.

### Switch On-Time and Off-Time Control

The A8739 implements an adaptive on-time/off-time control. On-time duration,  $t_{on}$ , is approximately equal to

$$t_{on} = I_{SWlim} \times L_{PRIMARY} / V_{BAT}.$$

Off-time duration,  $t_{off}$ , depends on the operating conditions during switch off-time. The A8739 applies two charging modes: Fast Charging mode and Timer mode, according to the conditions described in the next section.

### Timer Mode and Fast Charging Mode

The A8739 achieves fast charging times and high efficiency by operating in discontinuous conduction mode (DCM) through most of the charging process. The relationship of Timer mode and Fast Charging mode is shown in figure 2.

The IC operates in Timer mode when beginning to charge a completely discharged photoflash capacitor, usually when the output voltage,  $V_{OUT}$ , is less than approximately 30 V (depending on transformer used). Timer mode is a fixed period, 18  $\mu$ s, off-time control. One advantage of having Timer mode is that it limits the initial battery current surge and thus acts as a “soft-start.” A time-expanded view of a Timer mode interval is shown in figure 3.

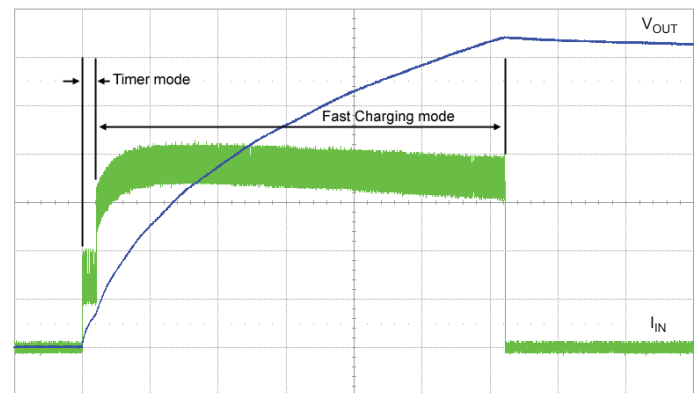


Figure 2. Timer mode and Fast Charging mode:  $V_{OUT} = 50$  V/div,  $I_{IN} = 100$  mA/div.,  $V_{IN} = V_{BAT} = 3.6$  V,  $C_{OUT} = 100$   $\mu$ F/330 V, ILIM = 1.0 A, and  $t = 1$  s/div.

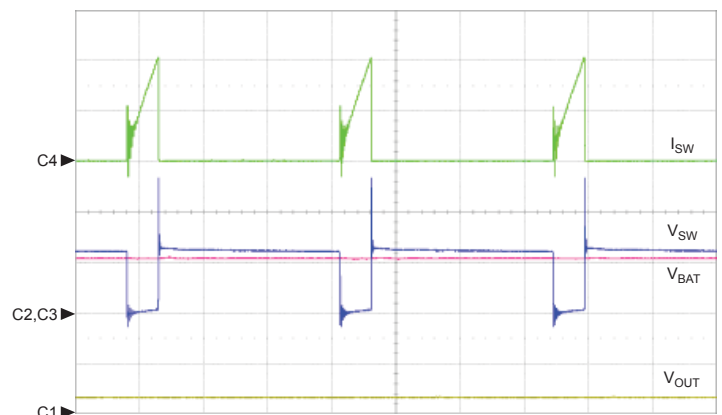


Figure 3. Expanded view of Timer mode:  $V_{OUT} \leq 10$  V,  $V_{BAT} = 5.5$  V, Ch1:  $V_{OUT} = 20$  V/div., Ch2:  $V_{BAT} = 5$  V/div., Ch3:  $V_{SW} = 5$  V/div., Ch4:  $I_{SW} = 500$  mA/div.,  $t = 5$   $\mu$ s/div.

As soon as a sufficient voltage has built up at the output capacitor, the IC enters Fast-Charging mode. In this mode, the next switching cycle starts after the secondary side current has stopped flowing, and the switch voltage has dropped to a minimum value. A proprietary circuit is used to allow minimum-voltage switching, even if the SW pin voltage does not drop to 0 V. This enables

Fast-Charging mode to start earlier, thereby reducing the overall charging time. Minimum-voltage switching is shown in figure 4.

During Fast-Charging mode, when  $V_{OUT}$  is high enough (over 50 V), true zero-voltage switching (ZVS) is achieved. This further improves efficiency as well as reduces switching noise. A ZVS interval is shown in figure 5.

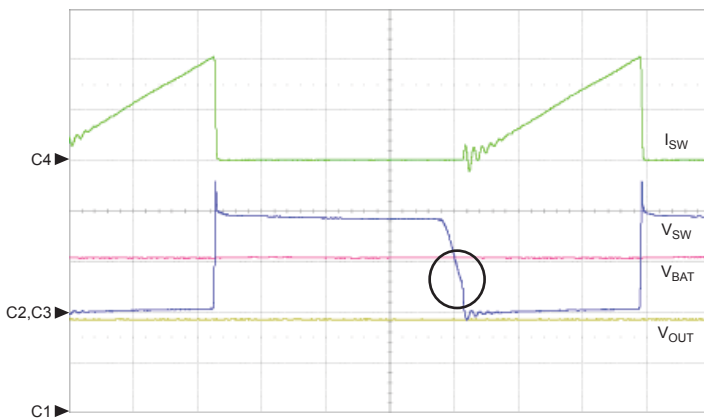


Figure 4. Minimum-voltage switching:  $V_{OUT} \geq 35$  V,  $V_{BAT} = 5.5$  V, Ch1:  $V_{OUT} = 20$  V/div., Ch2:  $V_{BAT} = 5$  V/div., Ch3:  $V_{SW} = 5$  V/div., Ch4:  $I_{SW} = 500$  mA/div.,  $t = 1$   $\mu$ s/div.

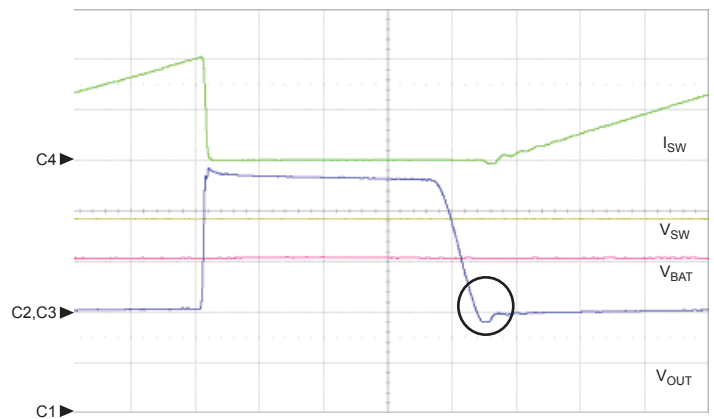


Figure 5. True zero-voltage switching (ZVS):  $V_{OUT} = 75$  V,  $V_{BAT} = 5.5$  V, Ch1:  $V_{OUT} = 20$  V/div., Ch2:  $V_{BAT} = 5$  V/div., Ch3:  $V_{SW} = 5$  V/div., Ch4:  $I_{SW} = 500$  mA/div.,  $t = 0.5$   $\mu$ s/div.

**ILIM Programming**

The peak current limit can be programmed to sixteen different levels, from 100% to 29%, with programming through the CHARGE pin. An internal digital circuit decodes the input clock signals, which sets the switch current limit. This flexible scheme allows the user to operate the A8739 at required current limits. The battery life can be effectively extended by setting a lower current limit at low battery voltages. Figure 6 shows the ILIM clock timing scheme protocol. The total ILIM setup time,  $t_{ILIM(SU)}$ , denotes the time needed for the decoder circuit to receive ILIM inputs and set  $I_{SWLIM}$ , and has a typical duration of 200  $\mu s$ .

Figure 7 shows the timing definition of the primary current

limiting circuit. At the end of the setup period,  $t_{ILIM(SU)}$ , primary current starts to ramp up to the set  $I_{SWLIM}$ . The  $I_{SWLIM}$  setting remains in effect as long as the CHARGE pin is high. To reset the ILIM decoder, pull the CHARGE pin low before clocking-in the new setting.

After the first start-up or an ILIM decoder reset, each new current limit can be set by sending a burst of pulses to the CHARGE pin. The first rising edge starts the ILIM decoder, and up to 16 rising edges will be counted to set the  $I_{SWLIM}$  level. The first pulse width,  $t_{ILIM1(H)}$ , must be at least 15  $\mu s$  long. Subsequent pulses (up to 15 more) can be as short as 0.2  $\mu s$ . The last low-to-high edge must arrive within 200  $\mu s$  from the first edge. The CHARGE pin will stay high afterwards.

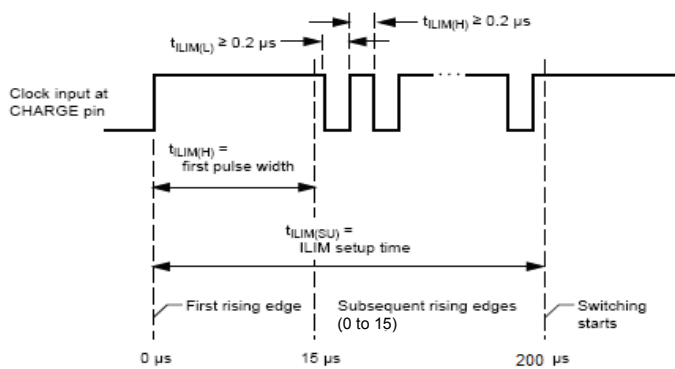


Figure 6. ILIM programming timing definition

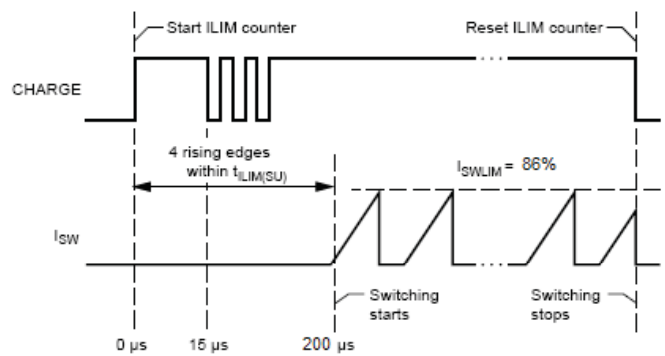


Figure 7. Current limit timing example ( $I_{SWLIM4}$  selected)

## Output Voltage Adjustment

The target output voltage of the A8739 is primarily determined by the transformer turns ratio, N:

$$V_{OUT} = 31.5 \text{ (V)} \times N$$

Typically N = 10, so the output voltage is approximately 315 V. This output voltage can be further programmed in 5 V decrements down to 295 V, by using an external resistor at the VBAT pin. This enables fine-tuning to achieve better accuracy, and provides greater flexibility in the selection of transformers. Refer to

figure 8 for example: An external resistor  $R_{BAT} = 2.32 \text{ k}\Omega$  is used to set the target output voltage at two steps lower, or 305 V when the transformer turns ratio = 10. Capacitor C3 is needed in case excessive switching noises is coupled into the VBAT pin, which may affect accuracy of target voltage.

The relationship of output voltage and VBAT resistance is shown in figure 9. To ensure proper voltage selection, use only 1% resistors. If C3 is used, make sure the RC filter time constant ( $R_{BAT} \times C3$ ) is less than 1  $\mu\text{s}$  approximately.

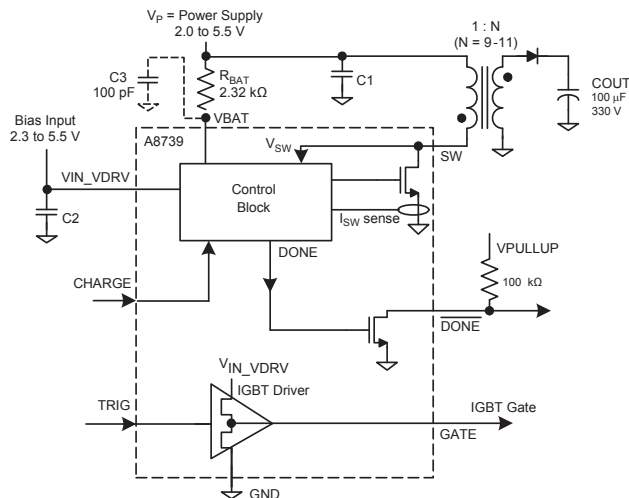
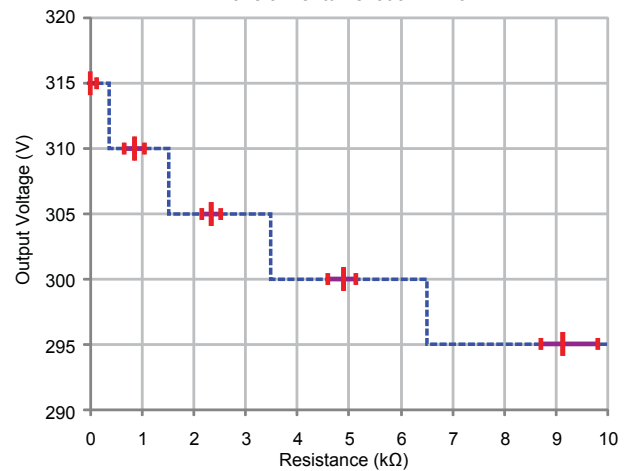


Figure 8. Adjustment of  $V_{OUT}$  using a series resistor at the VBAT pin ( $V_{OUT} = 30.5 \times N$ ).

Output Voltage versus VBAT Resistance  
Transformer turns ratio N = 10



Resistance, $R_{BAT}$ (kΩ)	Output Voltage, $V_{OUT}$ (V)	Recommended 1% Resistor Values (kΩ)	Recommended C3 capacitance (pF)
0 to 0.10	$31.5 \times N$	0	Optional
0.65 to 1.03	$31.0 \times N$	0.845	100
2.15 to 2.49	$30.5 \times N$	2.32	100
4.58 to 5.08	$30.0 \times N$	4.87	100
8.68 to 9.76	$29.5 \times N$	9.09	47

Figure 9. Relationship of  $V_{OUT}$  and a series resistor at the VBAT pin



## Applications Information

### Transformer Design

1. The transformer turns ratio,  $N$ , determines the output voltage:

$$N = N_S / N_P$$

$$V_{OUT} = 31.5 \times N - V_d ,$$

where 31.5 is the typical value of  $V_{OUTTRIP}$ , and  $V_d$  is the forward drop of the output diode.

2. The primary inductance,  $L_{PRIMARY}$ , determines the on-time of the switch:

$$t_{on} = (-L_{PRIMARY}/R) \times \ln(1 - I_{SWlim} \times R/V_{IN}) ,$$

where  $R$  is the total resistance in the primary current path (including  $R_{SWDS(on)}$  and the DC resistance of the transformer).

If  $V_{IN}$  is much larger than  $I_{SWlim} \times R$ , then  $t_{on}$  can be approximated by:

$$t_{on} = I_{SWlim} \times L_{PRIMARY} / V_{IN} .$$

3. The secondary inductance,  $L_{SECONDARY}$ , determines the off-time of the switch. Given:

$$L_{SECONDARY}/L_{PRIMARY} = N \times N , \text{ then}$$

$$t_{off} = (I_{SWlim} / N) \times L_{SECONDARY} / V_{OUT}$$

$$= (I_{SWlim} \times L_{PRIMARY} \times N) / V_{OUT} .$$

The minimum pulse width for  $t_{off}$  determines what is the minimum  $L_{PRIMARY}$  required for the transformer. For example, if  $I_{LIM8} = 1.0 \text{ A}$ ,  $N = 10$ , and  $V_{OUT} = 315 \text{ V}$ , then  $L_{PRIMARY}$  must be at least  $6.3 \mu\text{H}$  in order to keep  $t_{off}$  at 200 ns or longer. These relationships are illustrated in figure 10.

In general, choosing a transformer with a larger  $L_{PRIMARY}$  results in higher efficiency (because a larger  $L_{PRIMARY}$  corresponds to a lower switch frequency and hence lower switching loss). But transformers with a larger  $L_{PRIMARY}$  also require more windings and larger magnetic cores. Therefore, a trade-off must be made between transformer size and efficiency.

### Leakage Inductance and Secondary Capacitance

The transformer design should minimize the leakage inductance to ensure the turn-off voltage spike at the SW node does not exceed the absolute maximum specification on the SW pin (refer to the Absolute Maximum Ratings table). An achievable minimum leakage inductance for this application, however, is usually compromised by an increase in parasitic capacitance. Furthermore, the transformer secondary capacitance should be minimized. Any secondary capacitance is multiplied by  $N^2$  when reflected to the primary, leading to high initial current swings when the switch turns on, and to reduced efficiency.

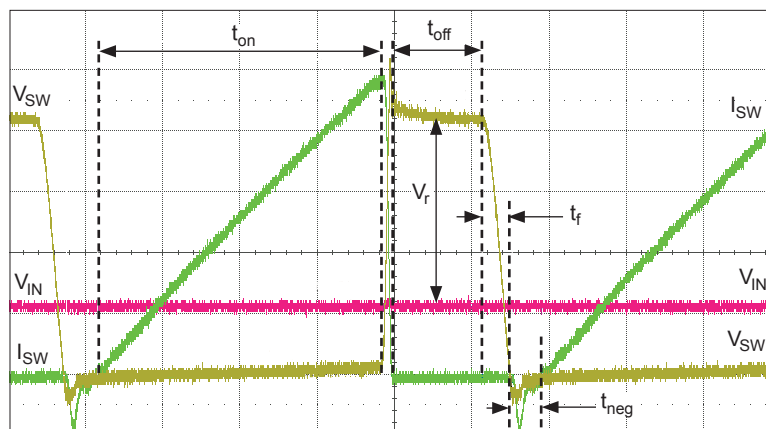


Figure 10. Transformer Selection Relationships

**Input Capacitor Selection**

Ceramic capacitors with X5R or X7R dielectrics are recommended for the input capacitor,  $C_{IN}$ . During initial Timer mode the device operates with 18  $\mu$ s off-time. The resonant period caused by input filter inductor and capacitor should be at least 2 times greater or smaller than the 18  $\mu$ s Timer period, to reduce input ripple current during this period. The typical input LC filter is shown in figure 11.

The resonant period is given by:

$$T_{res} = 2 \pi (L \times C_{IN})^{1/2} .$$

The effects of input filter components are shown in figures 12, 13, and 14. It is recommended to use at least 10  $\mu$ F / 6.3 V to decouple the battery input,  $V_{BAT}$ , at the primary of the transformer. Decouple the VIN pin using 0.1  $\mu$ F / 6.3 V bypass capacitor.

**Output Diode Selection**

Choose rectifying diodes, D1, to have small parasitic capacitance (short reverse recovery time) while satisfying the reverse voltage and forward current requirements. The peak reverse voltage of the diodes,  $V_{DPeak}$ , occurs when the internal MOSFET switch is closed. It can be calculated as:

$$V_{DPeak} = V_{OUT} + N \times V_{BAT} .$$

The peak current of the rectifying diode,  $I_{DPeak}$ , is calculated as:

$$I_{DPeak} = I_{PRIMARY\_Peak} / N .$$

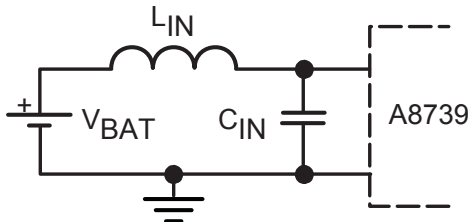


Figure 11. Typical input section with input inductance (inductance,  $L_{IN}$ , may be an input filter inductor or inductance due to long wires in test setup)

Effects of Input Filters

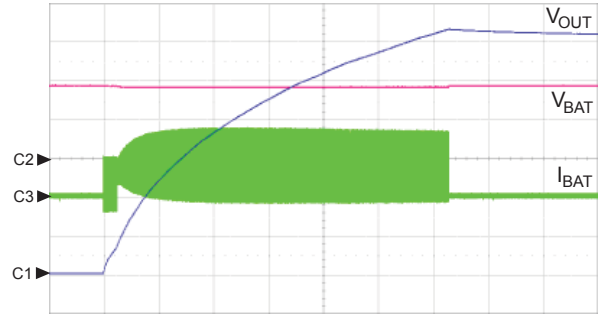


Figure 12. Input current waveforms with Li+ battery connected by 5-in. wire and decoupled by 4.7  $\mu$ F capacitor,  $C_{OUT} = 100 \mu$ F,  $V_{IN} = V_{BAT} = 3.6$  V, Ch1:  $V_{OUT} = 50$  V/div, Ch2:  $V_{BAT} = 2$  V/div, Ch3:  $I_{BAT} = 500$  mA/div,  $t = 1$  s/div

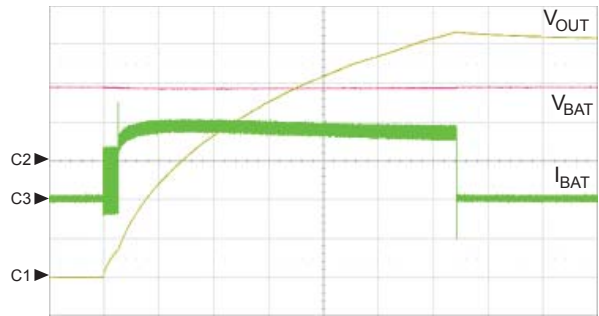


Figure 13. Input current waveforms with Li+ battery connected through 4.7  $\mu$ H inductor and 4.7  $\mu$ F capacitor,  $C_{OUT} = 100 \mu$ F,  $V_{IN} = V_{BAT} = 3.6$  V, Ch1:  $V_{OUT} = 50$  V/div, Ch2:  $V_{BAT} = 2$  V/div, Ch3:  $I_{BAT} = 200$  mA/div,  $t = 1$  s/div

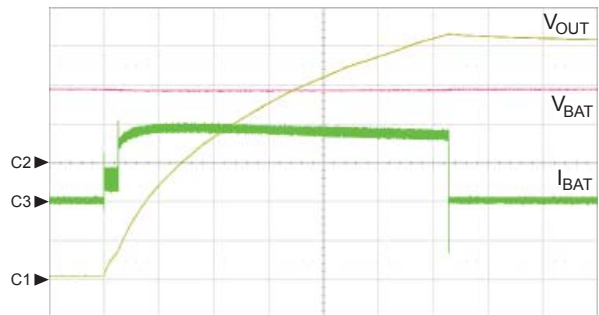


Figure 14. Input current waveforms with Li+ battery connected through 4.7  $\mu$ H inductor and 10  $\mu$ F capacitor,  $C_{OUT} = 100 \mu$ F,  $V_{IN} = V_{BAT} = 3.6$  V, Ch1:  $V_{OUT} = 50$  V/div, Ch2:  $V_{BAT} = 2$  V/div, Ch3:  $I_{BAT} = 200$  mA/div,  $t = 1$  s/div

## Layout Guidelines

Key to a good layout for the photoflash capacitor charger circuit is to keep the parasitics minimized on the power switch loop (transformer primary side) and the rectifier loop (secondary side). Use short, thick traces for connections to the transformer primary and SW pin. It is important that the  $\overline{DONE}$  signal trace and other signal traces be routed away from the transformer and other switching traces, in order to minimize noise pickup. In addition, high voltage isolation rules must be followed carefully to avoid breakdown failure of the circuit board.

Avoid placing any ground plane area underneath the transformer secondary and diode, to minimize parasitic capacitance.

For low threshold logic (<1.2 V) add 1 nF capacitors across the CHARGE and TRIGGER pins to GND to avoid malfunction due to noise.

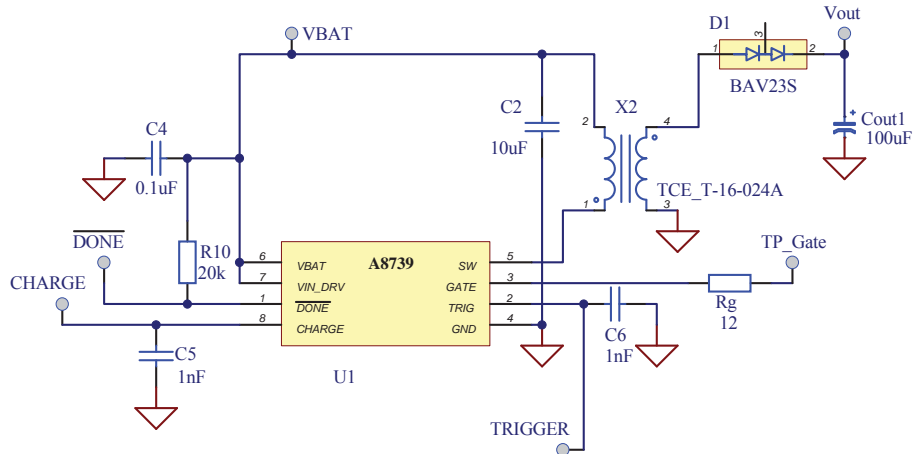
Connect the EE package PAD to the ground pad for better thermal performance. Use ground planes on the top and bottom layers below the IC and connect them through multiple thermal vias. Refer to the figures on page 20 for recommended layout.

## Recommended Components

Component	Rating	Part Number	Source
C1, Input Capacitor	10 $\mu$ F, $\pm 10\%$ , 6.3 V, X5R ceramic capacitor (0805)	JMK212BJ106K	Taiyo Yuden
C2	0.1 $\mu$ F, 6.3V X5R ceramic capacitor		
C <sub>OUT</sub> , Photoflash Capacitor	100 $\mu$ F / 330 V	EPH-31ELL101B131S	Chemi-Con
D1, Output Diode	2 x 250 V, 225 mA, 5 pF	BAV23S	Philips Semiconductor, Fairchild Semiconductor
T1, Transformer	L <sub>PRIMARY</sub> = 12.8 $\mu$ H, N= 10.25, 6.5 x 8 x 4 mm	T-16-024A	Tokyo Coil Electric

### Recommended layout:

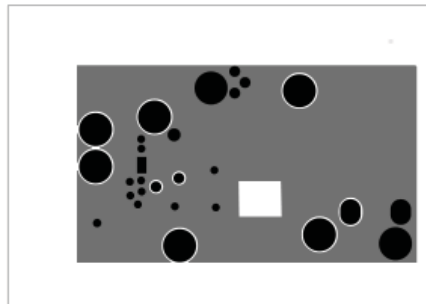
Schematic



Top side



Bottom side



Top components

